



# CASE STUDIES

---

A guided tour along the recycling paths





# TOUR PLAN

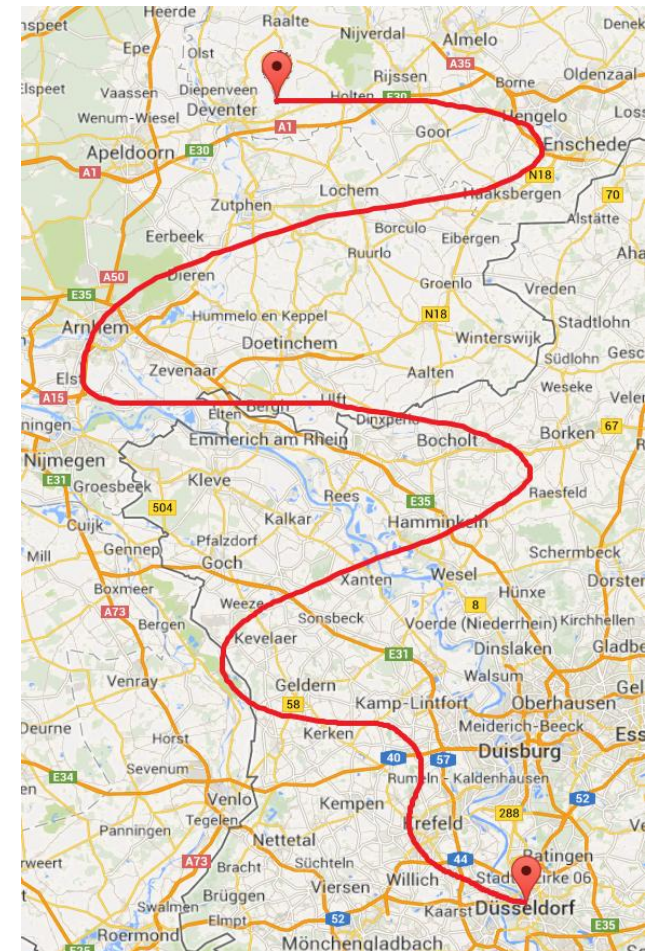
## ➤ Comparison of Systematic Approaches Assessment of Recyclability

### ➤ Recycling paths

- PE/PP
- PET
- Paper and board




### ➤ VIP-passangers

- Yoghurt cups
- PP-bottle
- PE bottle with sleeve
- Flower pot (black)
- PET tray



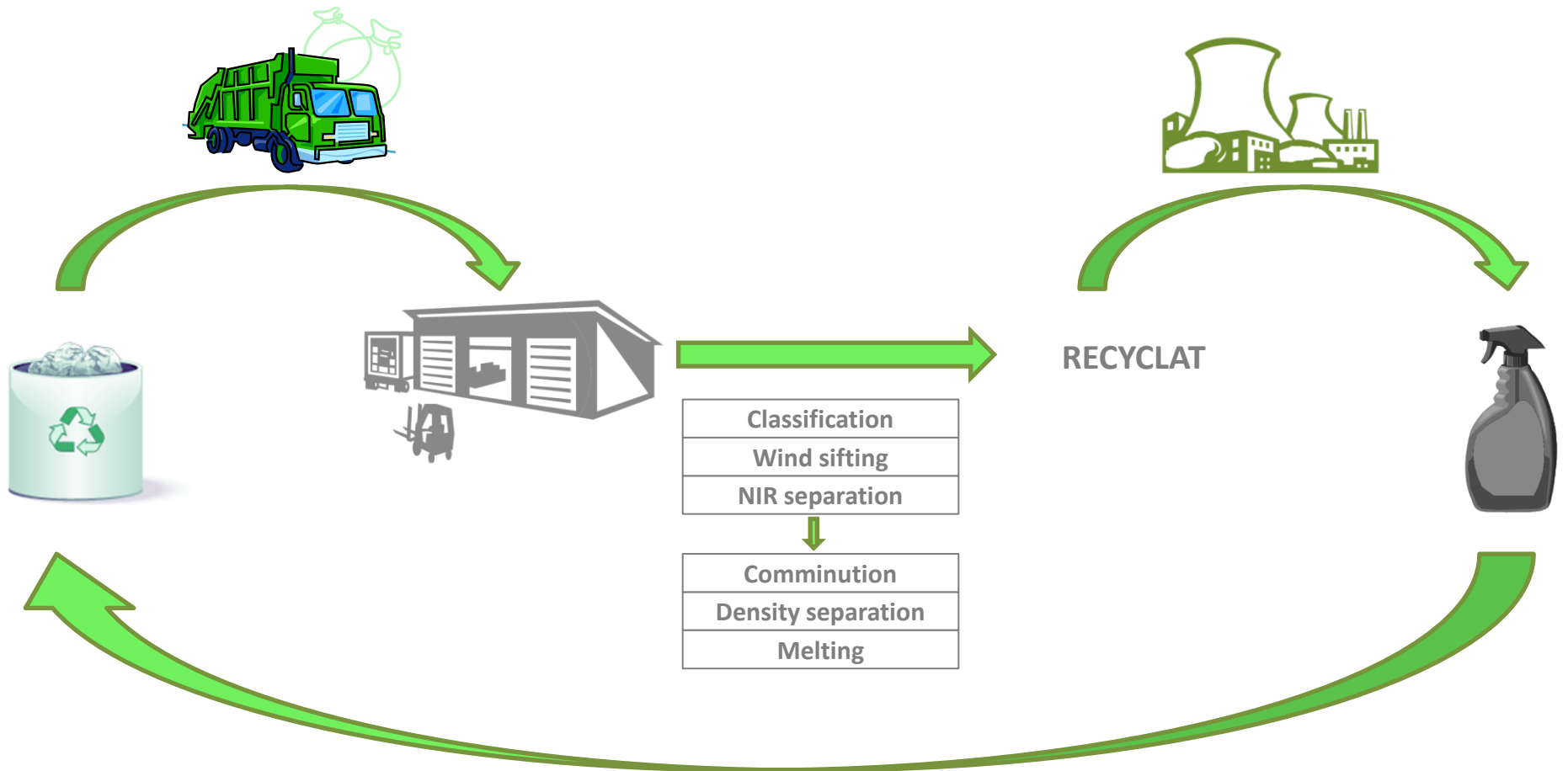


## Comparison of Systematic Approaches Assessment of Recyclability

	RecyClass	Recoup	ARGE cyclos/HTP
			
<b>Type</b>	guidelines + decision-tree + categorised (A to F) label additional bonification of percentage of recycle in packaging item (+ to +++)	guidelines for optimal recycling design, no classification of single packaging items	assesment of single items and evaluation of recycling percentage in regard of recovery system (collection to recycle)
<b>Main subject</b>	plastic packaging in general; specs. for: PET-bottles, HDPE-bottles, PP-bottles, PTT from PE/PP, PET thermoforms (underway), flexible films	plastic packaging	separate collected packaging waste (plastic, glass, paper, metal, composites) but not limited to this
<b>Main focus</b>	mechanical recycling process	universal, widely open to different systems	recycling path oriented (collection, sorting, recycling process) single item assesment
<b>Evaluation criteria</b>	I. element: guidelines II. element: decision tree III. element: evaluation categories	I. element: guidelines II. element: evaluation categories	I. element: recycling path and collection II. element: disposition in sorting III. element: disposition in recycling IV. element: evaluation categories



# RECYCLING PATH PLASTICS

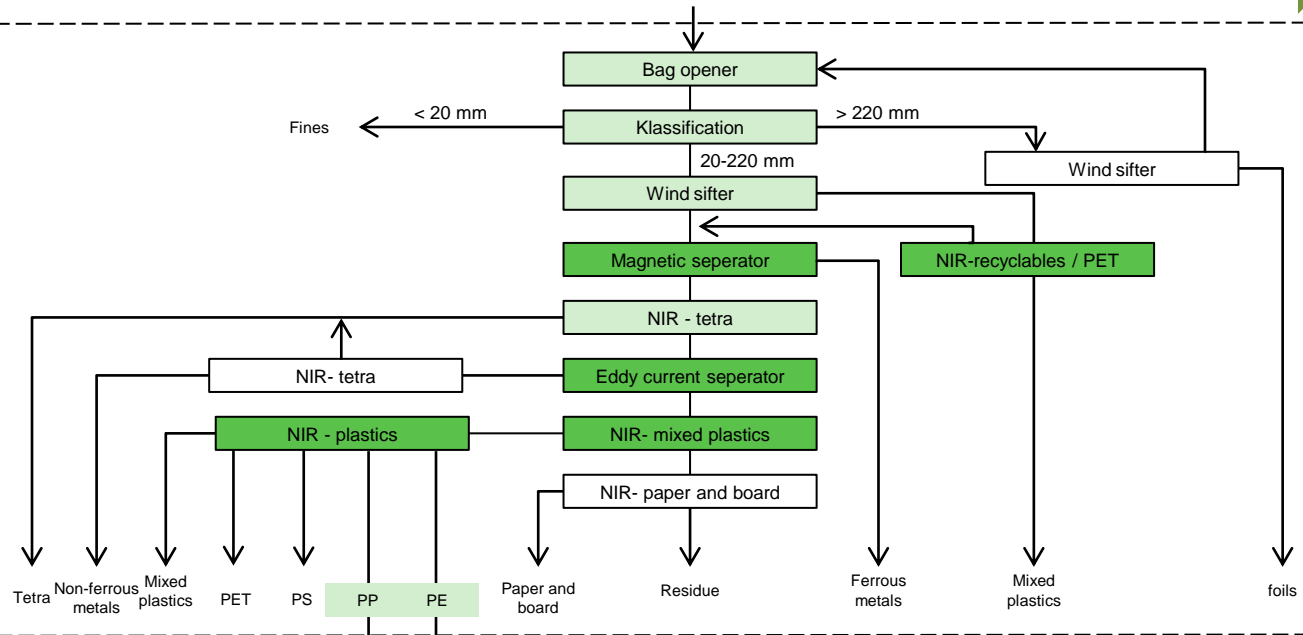




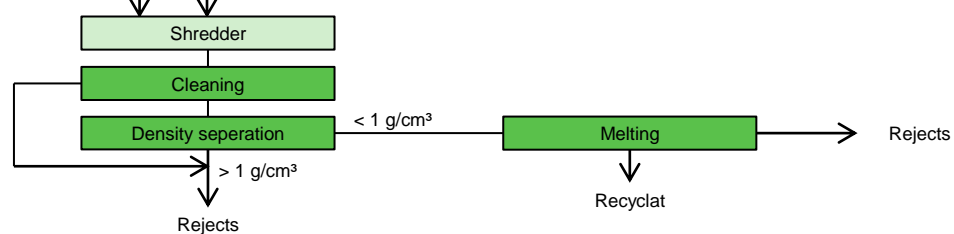
# RECYCLING PATH PE/PP



Sorting



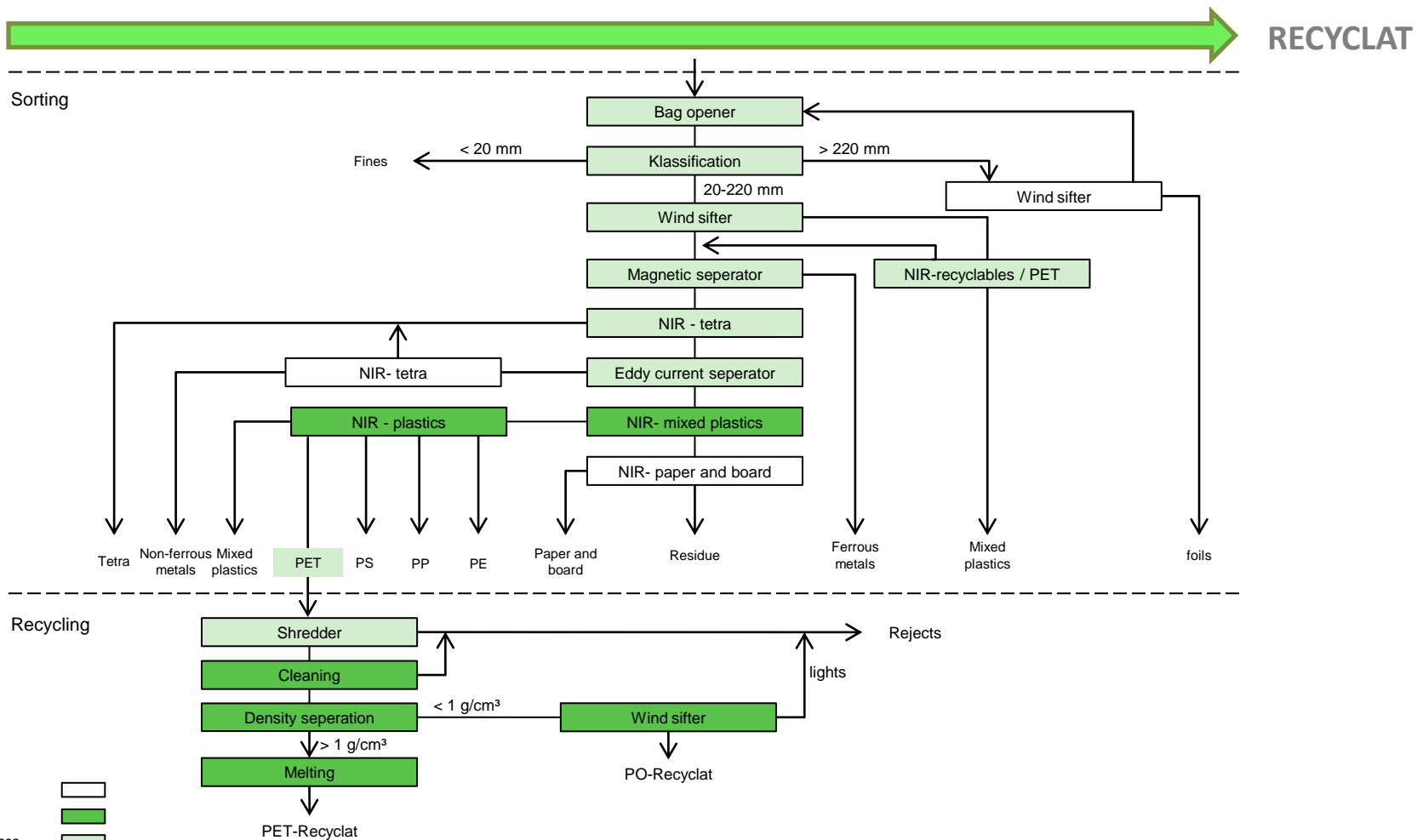
Recycling



- Specific process step without relevance
- Significant process step
- Significant process step in individual cases

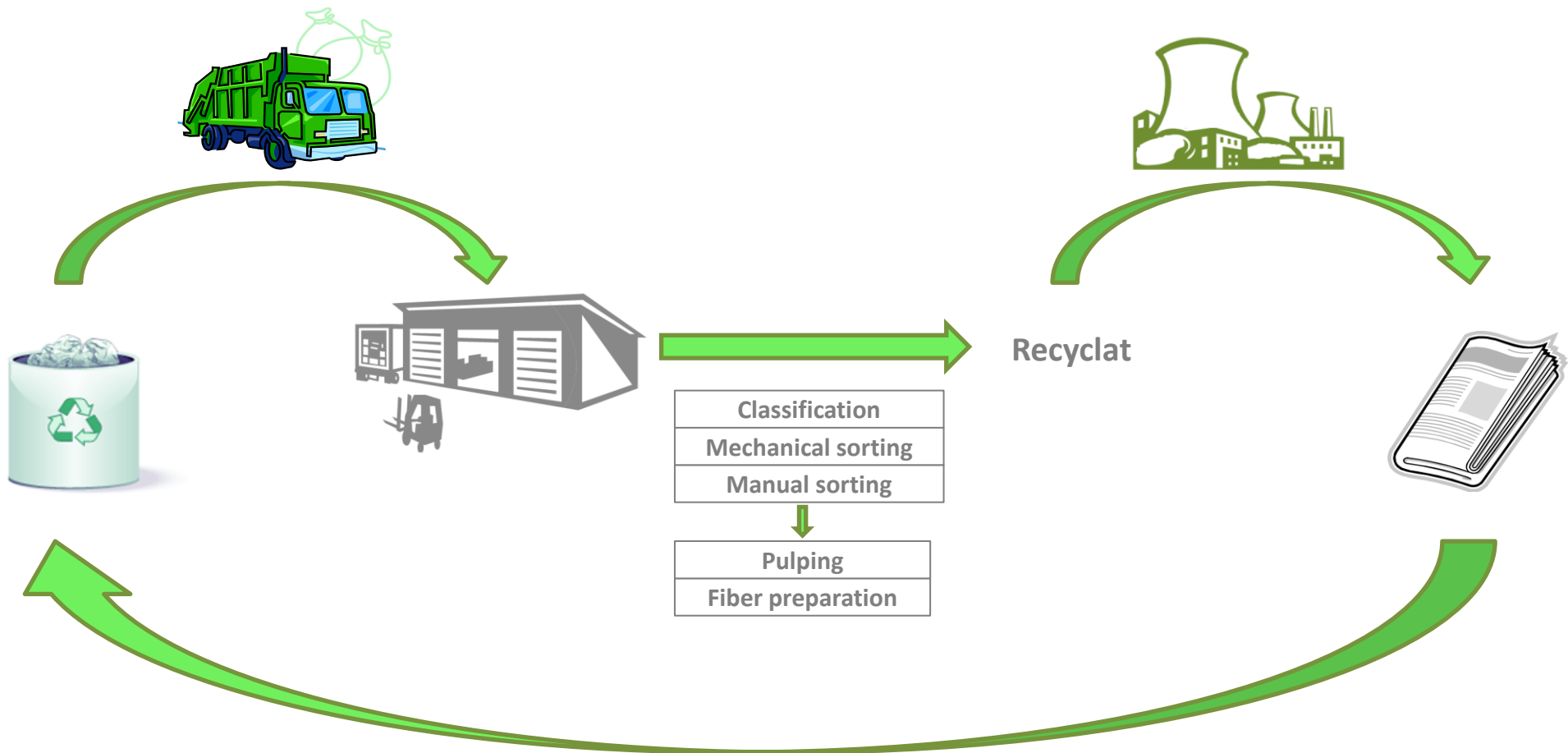


# RECYCLING PATH PET



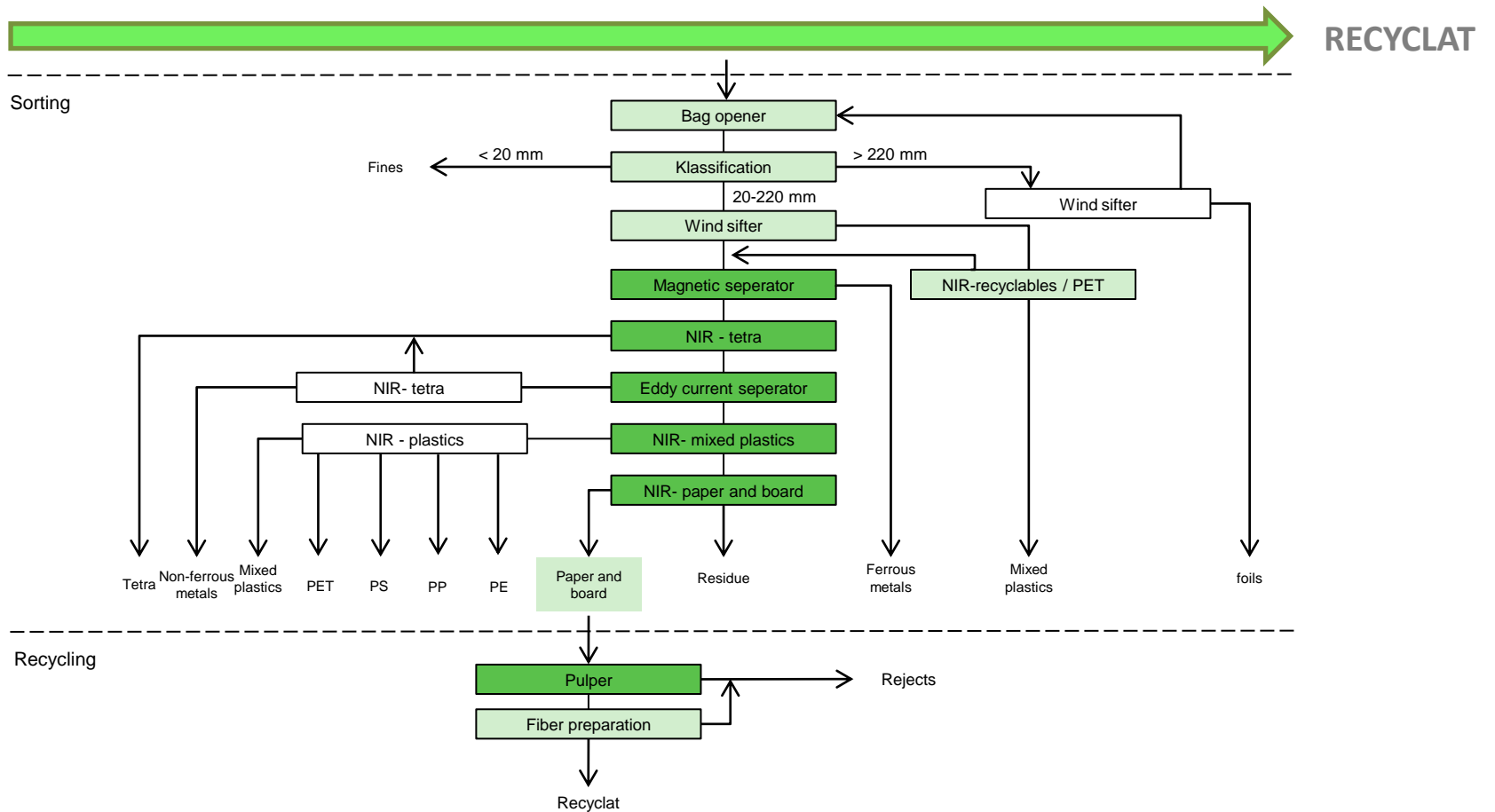


# RECYCLING PATH PAPER AND BOARD





# Paper and board packaging waste



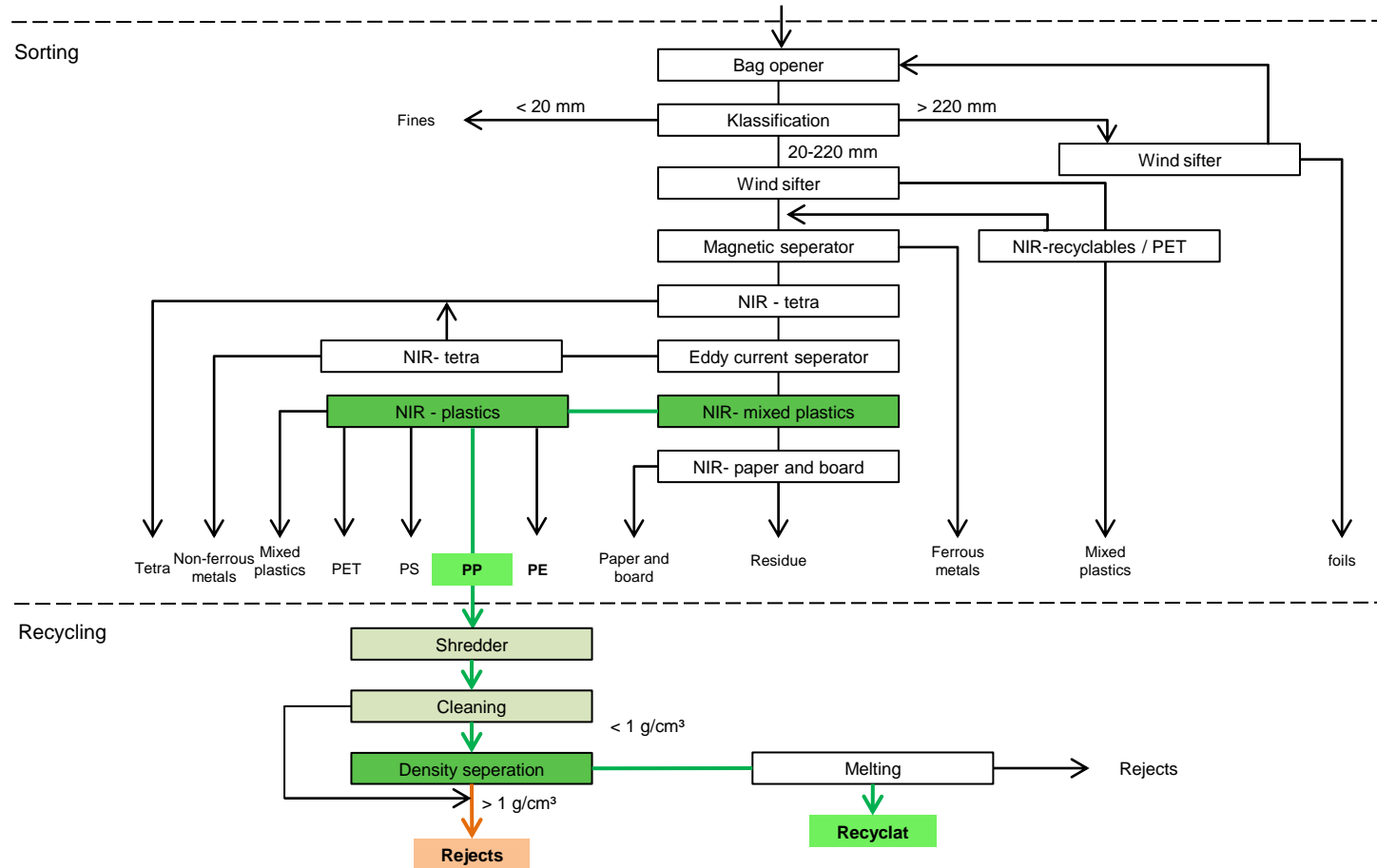




# VIP PASSENGERS – PP YOGHURT CUP with chalk



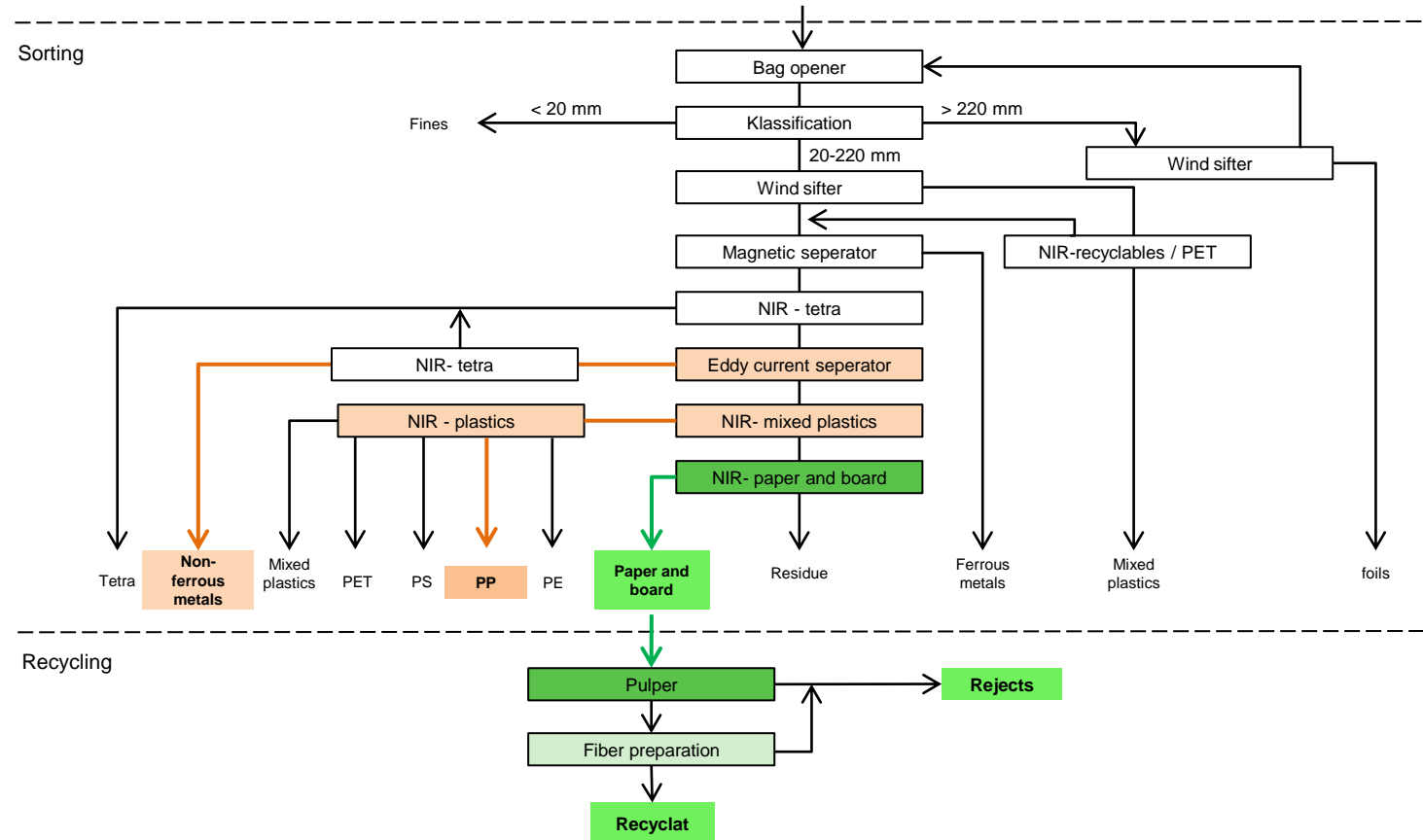
Source: grüne-helden.de



Evaluation RecyClass: Evaluated as category **F** because of density caused by chalk and colour.



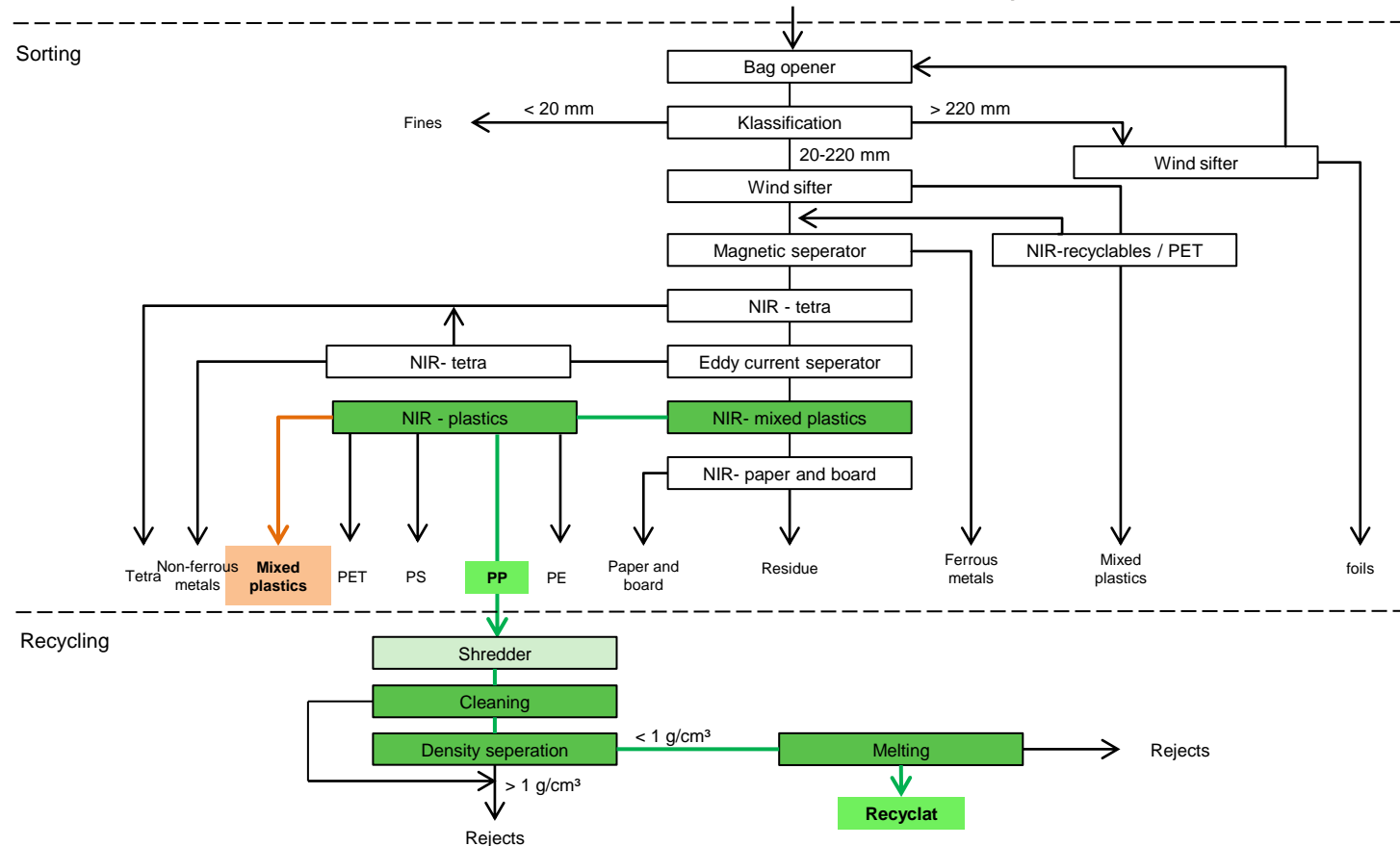
# VIP PASSENGERS – PP YOGHURT CUP with three components



Evaluation RecyClass: Not suitable for that analysis because of the paper covered packaging surface.



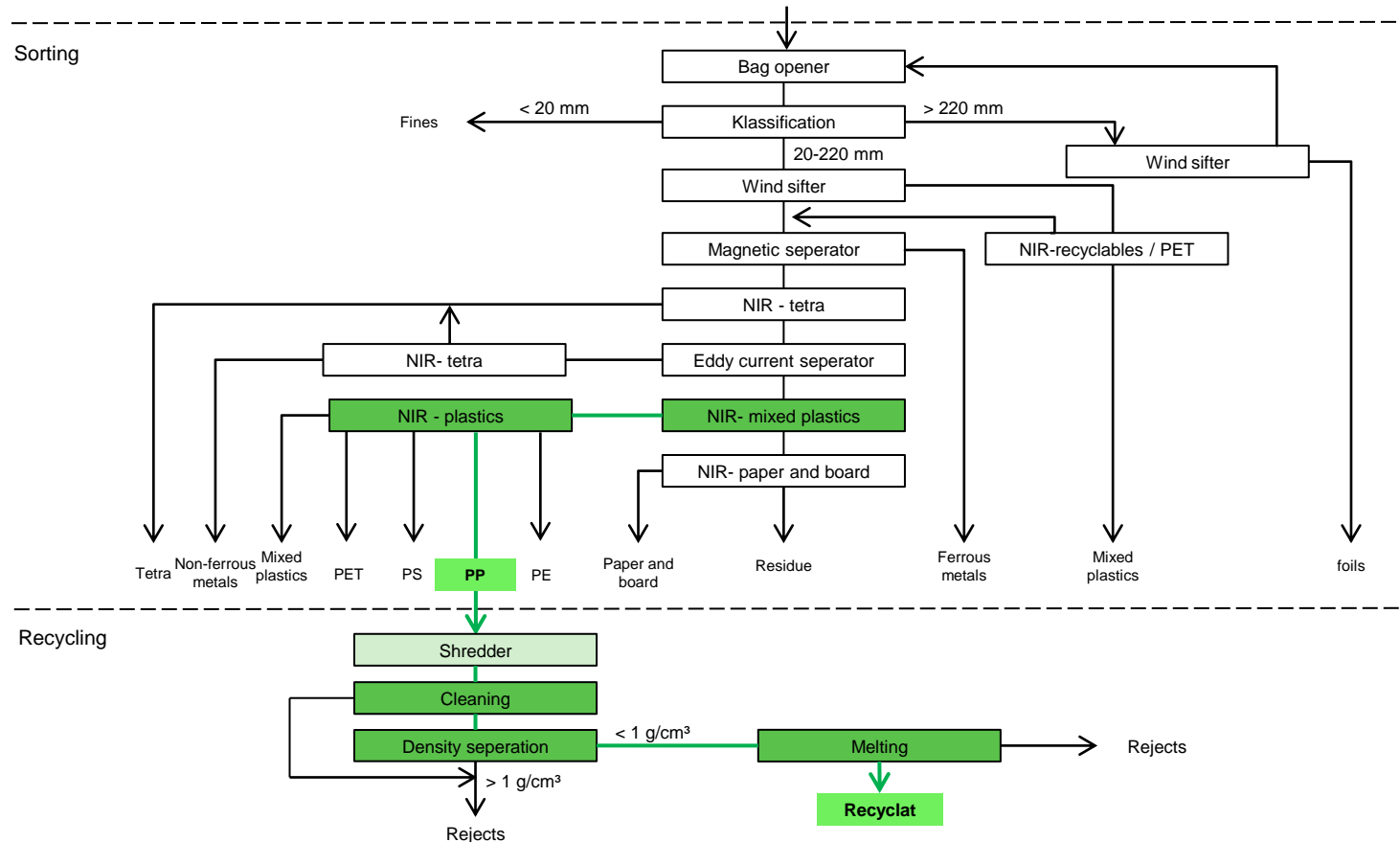
# VIP PASSENGERS – PP YOGHURT CUP with multilayer lid



Evaluation RecyClass: From category **B** to category **E** because of the coloured body and the multilayer lid.



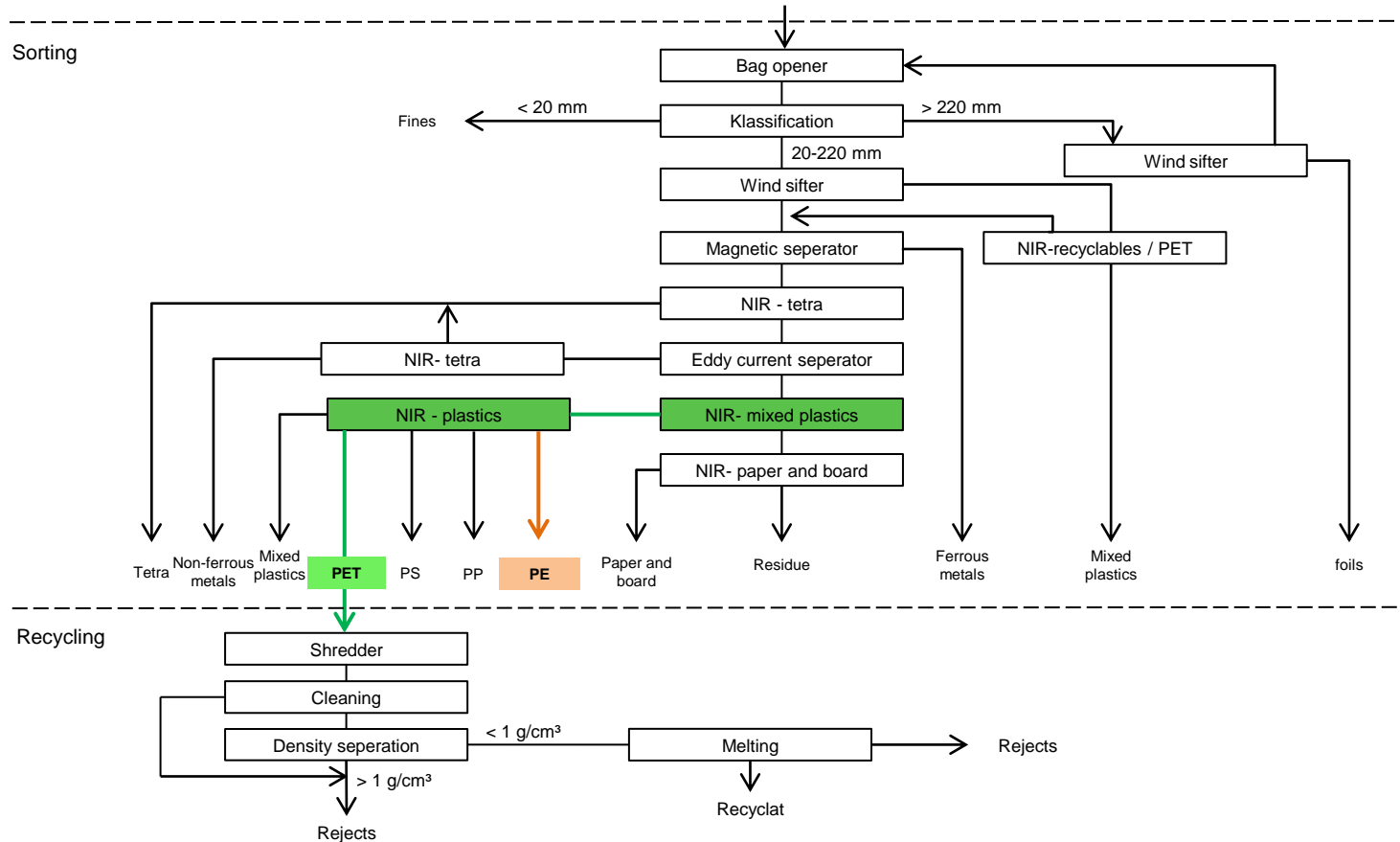
# VIP PASSENGERS – PP bottle



Evaluation RecyClass: From category **A** to category **C** because of the label and colour.



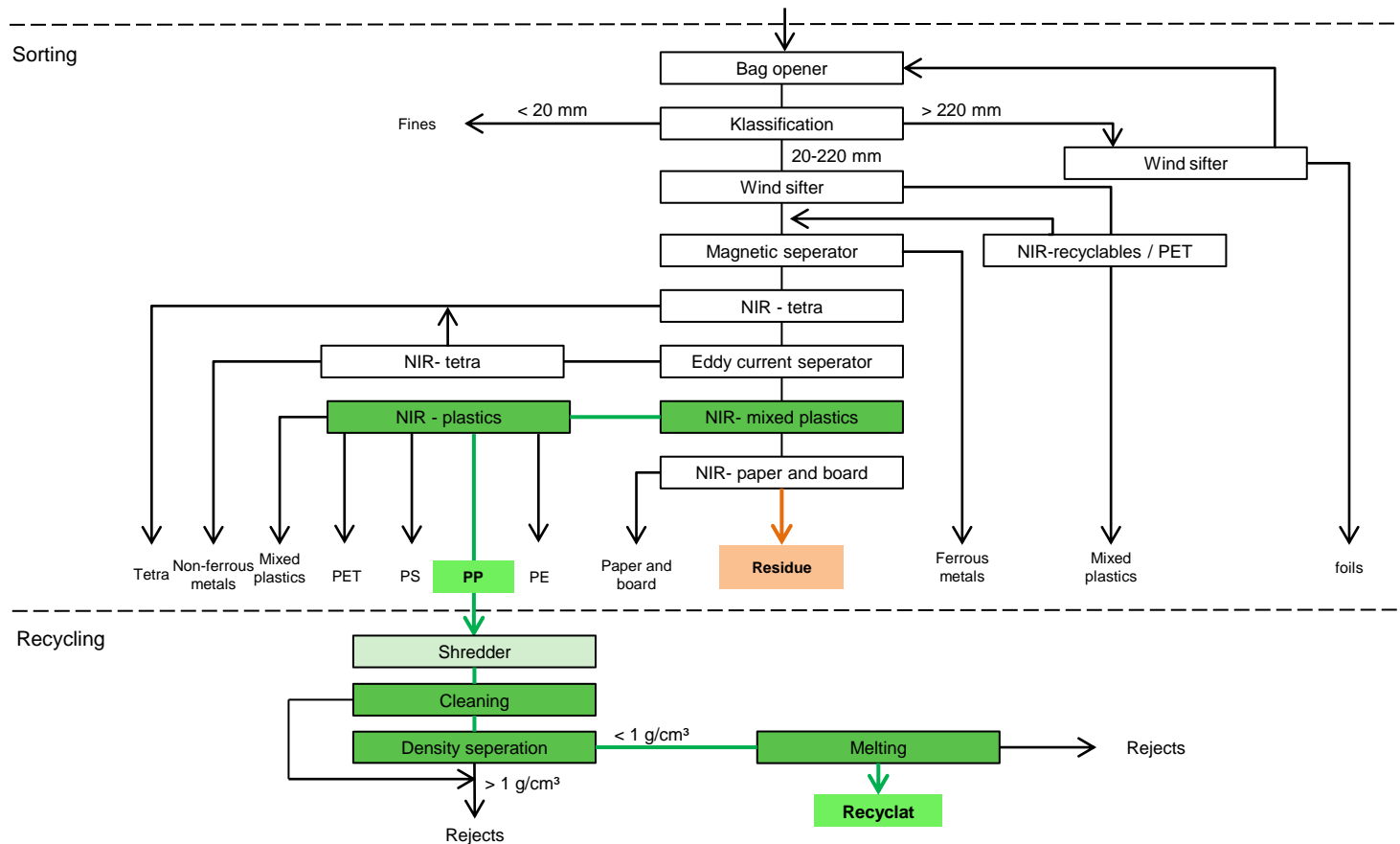
# VIP PASSENGERS – PE bottle with sleeve



Evaluation RecyClass: From categorie **B** to category **E** because of the sleeve.



# VIP PASSENGERS – PP flower pot



Evaluation RecyClass: From categorie **A** to category **D** because of the dark colour.



Thank you for your attention!

---



ARGE cyclos / HTP